



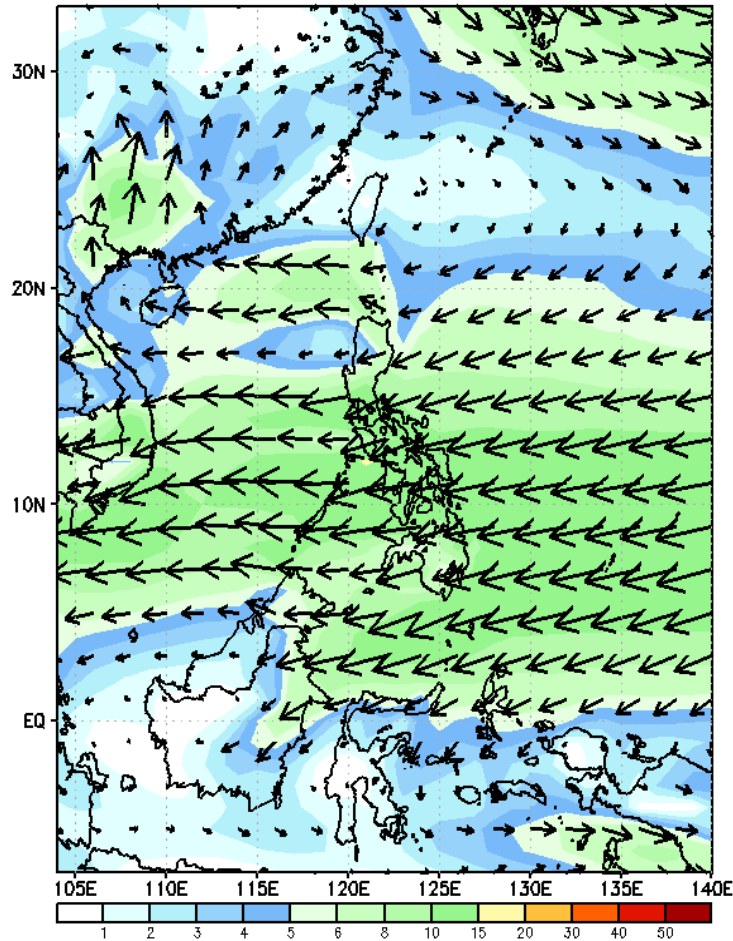
Week 1 & Week 2 Forecast for the Philippines using GEFS Model



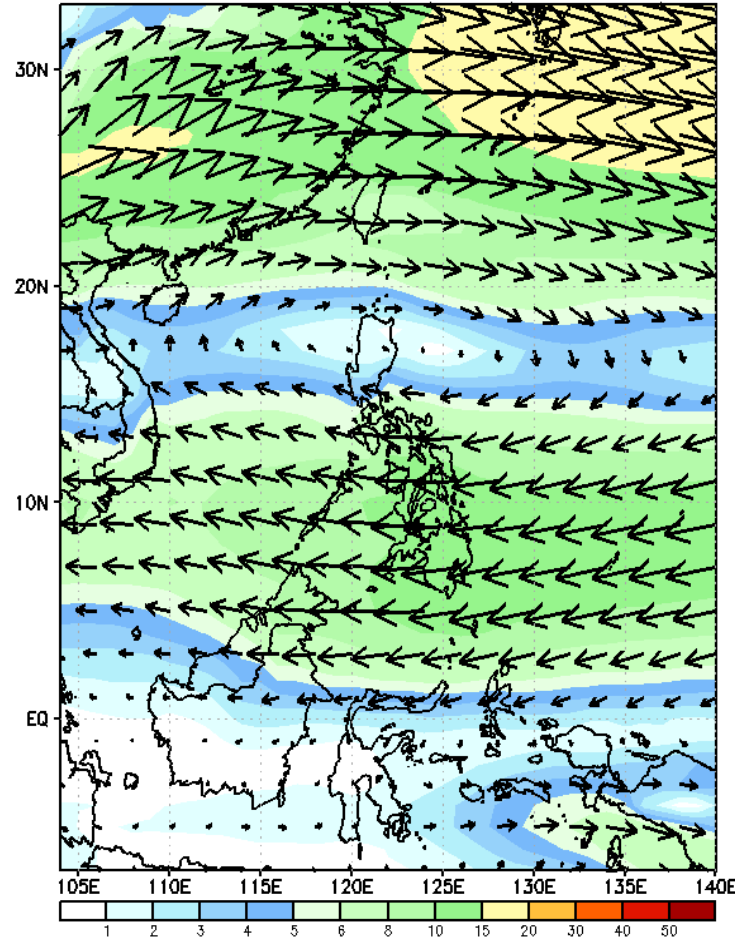
GEFS Week-1 Wind Forecasts:

Week 1: Feb 21-27, 2025

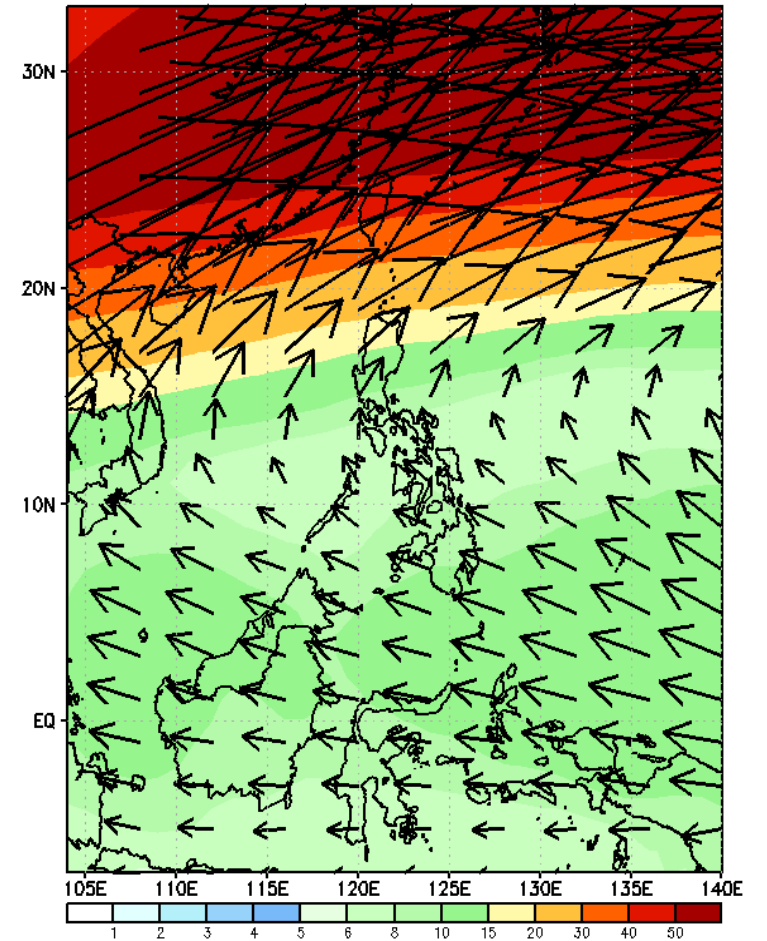
GEFS Week-1 850-hPa Wind Total
Valid: 20250221 - 20250227



GEFS Week-1 700-hPa Wind Total
Valid: 20250221 - 20250227

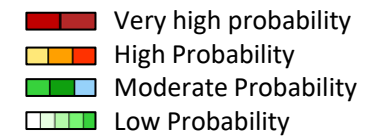


GEFS Week-1 200-hPa Wind Total
Valid: 20250221 - 20250227



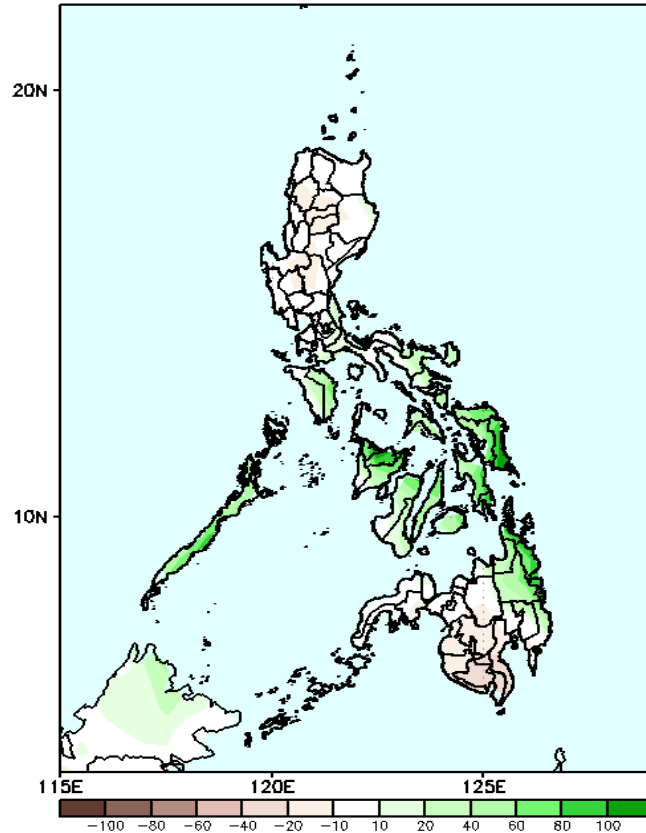
Northeast Monsoon affecting Northern and Central Luzon while Easterlies affecting the rest of the country during the forecast period

Precipitation Anomaly and Exceedance Probability > 25/50 mm



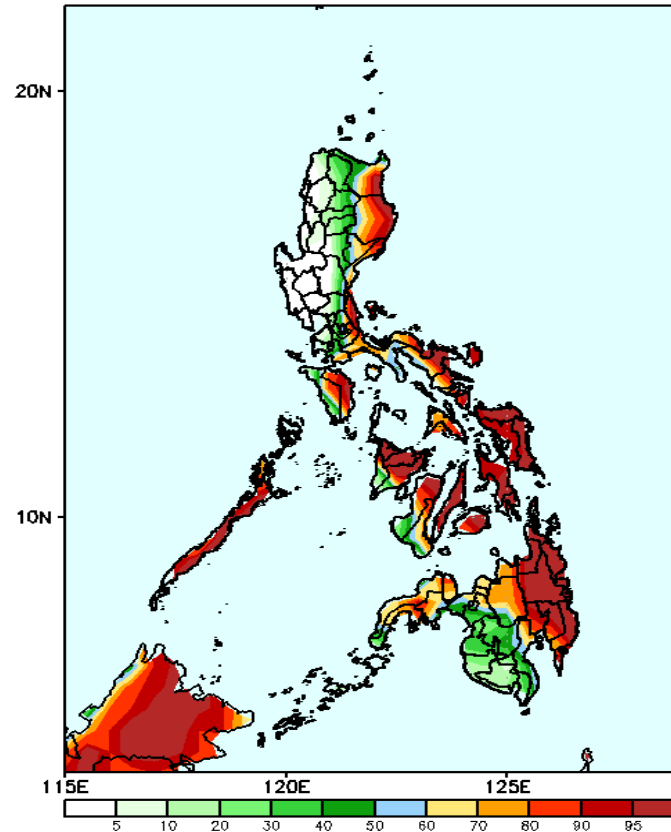
Week 1: Feb 21-27, 2025

GEFS Week-1 Precip Anomaly
Valid: 20250221 - 20250227



Increase of rainfall of 20-80mm is expected in most parts of southern Luzon; 40-100mm in Visayas and eastern Mindanao.

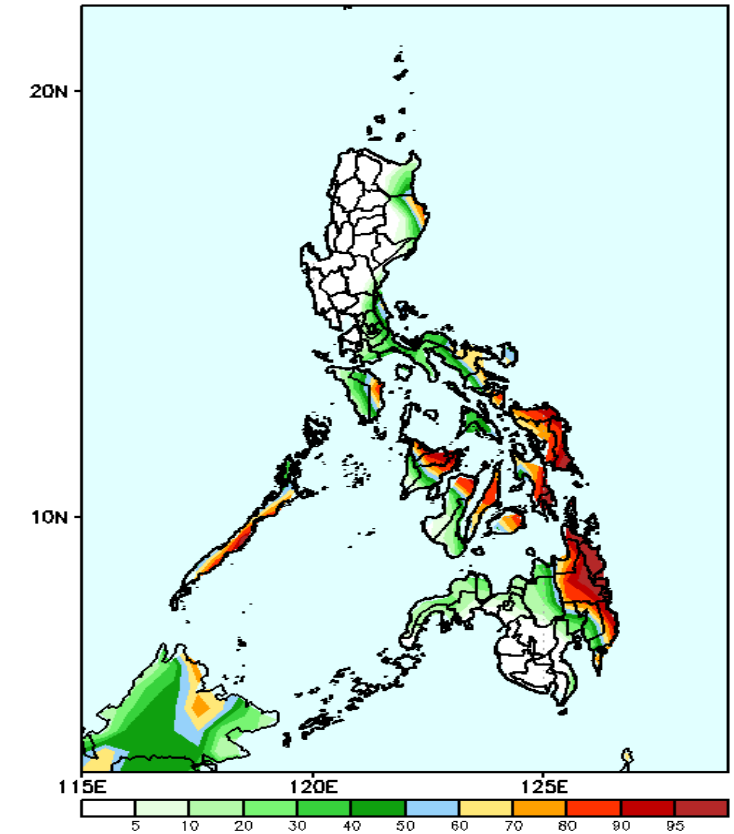
GEFS Week-1 Exceedance Prob. > 25mm
Valid: 20250221 - 20250227



Probability to Exceed 25mm

- High to very high over the eastern parts of Luzon, Oriental Mindoro, Palawan, most parts of Visayas and eastern parts of Mindanao;
- Moderate to high over most of CAR, Occ. Mindoro, western parts of Panay and Negros Island, and the rest of Mindanao;
- Low to moderate over the rest of Luzon

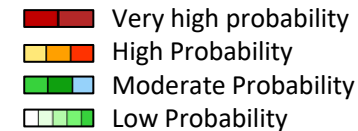
GEFS Week-1 Exceedance Prob. > 50mm
Valid: 20250221 - 20250227



Probability to Exceed 50mm

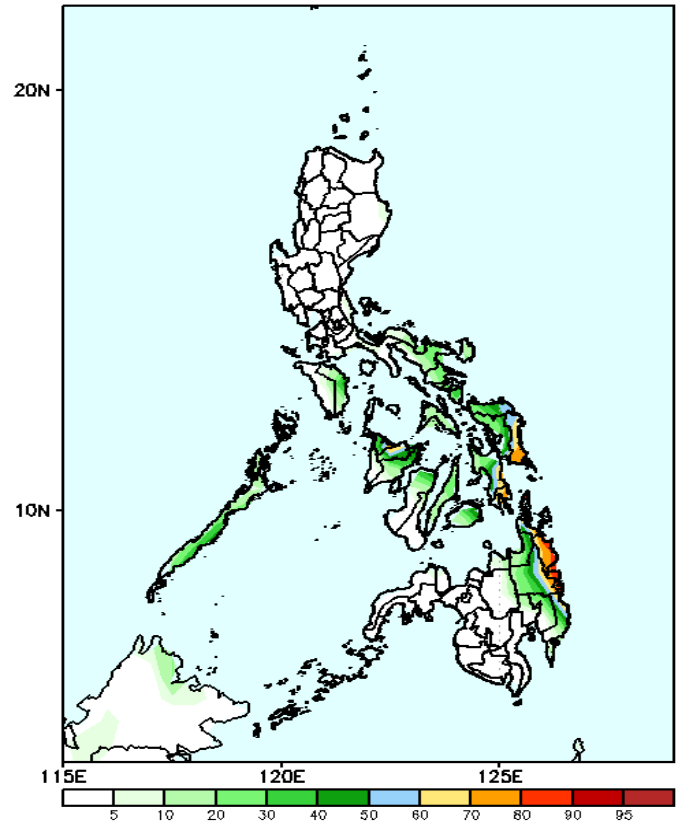
- High to very high over Aklan, Capiz, the northeastern part of Iloilo, Samar Provinces, and Caraga;
- Moderate to high over the easternmost part of Isabela, Quezon, MIMAROPA (except for Oriental Mindoro), the northern part of Negros Occidental, Central Visayas, Leyte Provinces and the rest of Eastern Mindanao;
- Low to moderate over the rest of the country.

Exceedance Probability > 100/150/200 mm



Week 1: Feb 21-27, 2025

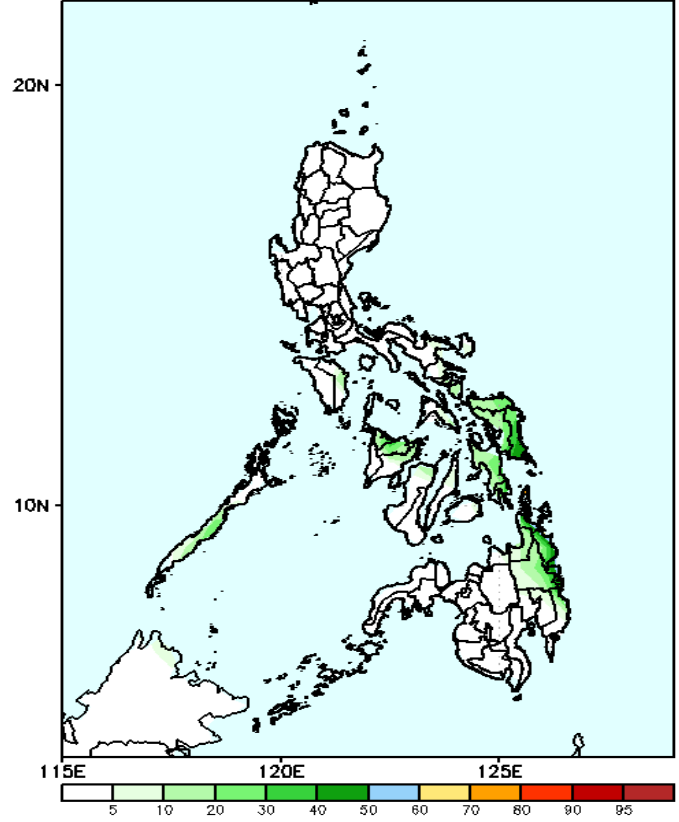
GEFS Week-1 Exceedance Prob. > 100mm
Valid: 20250221 - 20250227



Probability to Exceed 100mm

- Moderate to high over most of Aklan, Capiz, Eastern Visayas, and most of Caraga;
- Low to moderate over MIMAROPA, Bicol Region and the rest of Visayas and Eastern Mindanao;
- Low to over the of the country.

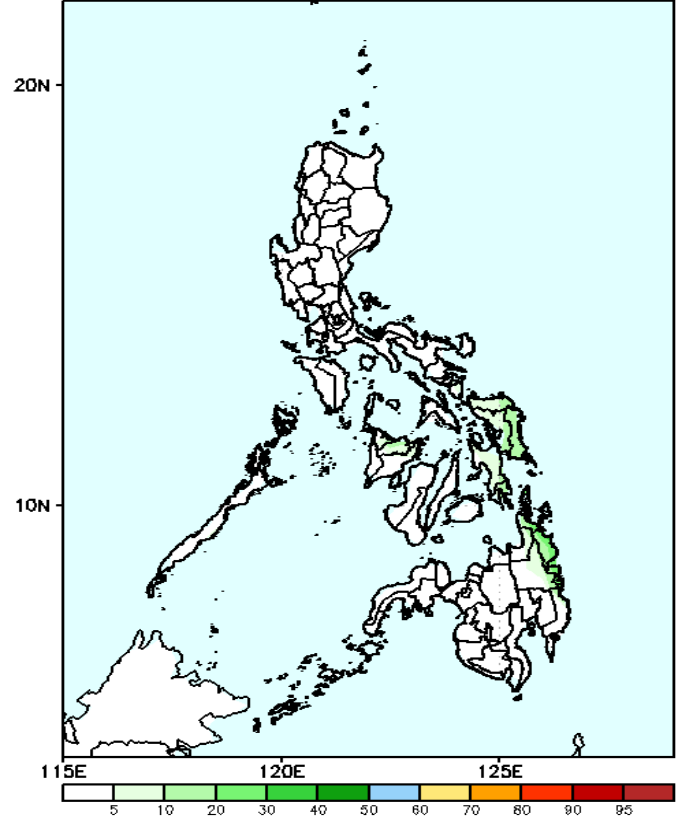
GEFS Week-1 Exceedance Prob. > 150mm
Valid: 20250221 - 20250227



Probability to Exceed 150mm

- Low to moderate over most of Visayas, and Eastern Mindanao;
- Low to over the of the country.

GEFS Week-1 Exceedance Prob. > 200mm
Valid: 20250221 - 20250227



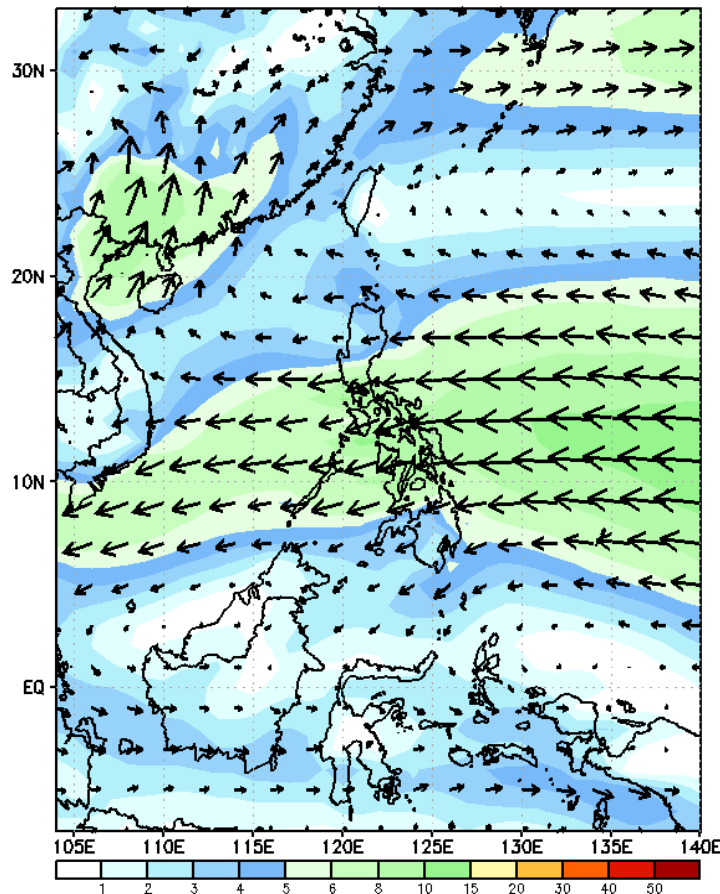
Probability to Exceed 200mm

- Low across the country.

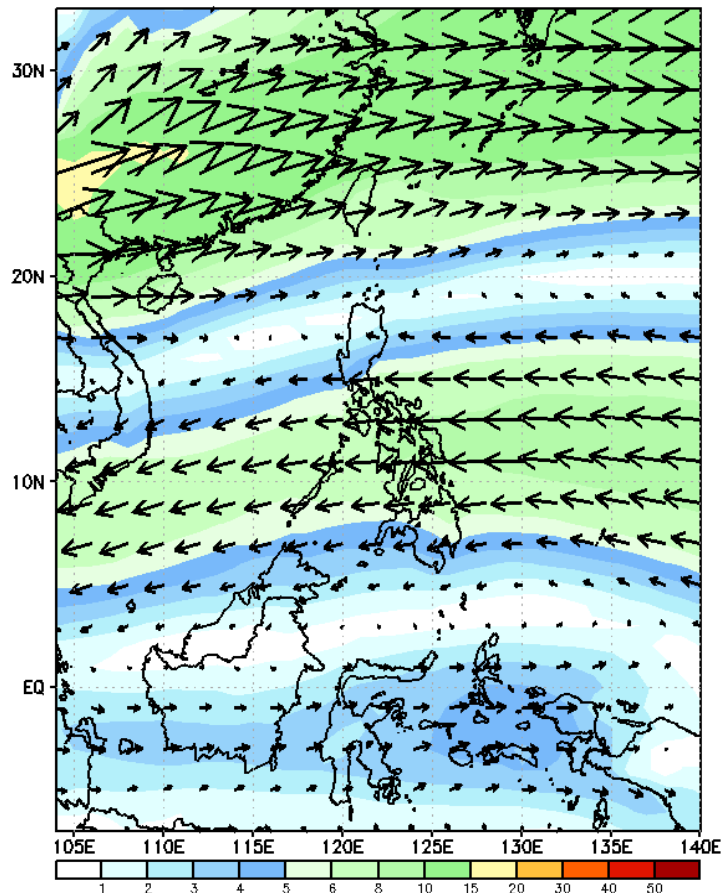
GEFS Week-2 Wind Forecasts:

Week 2: Feb 28-Mar 06, 2025

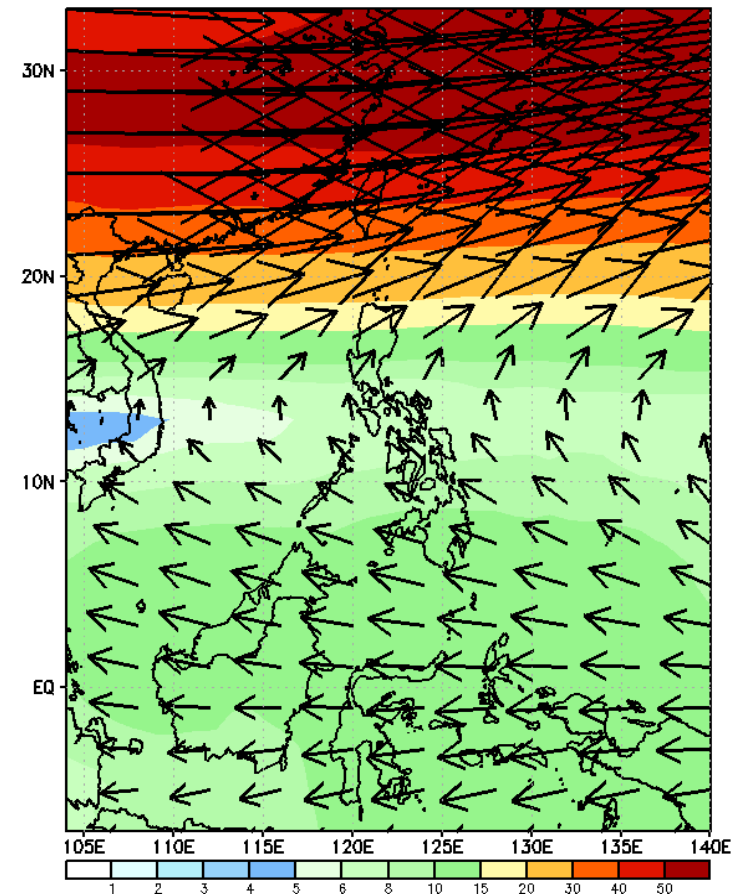
GEFS Week-2 850-hPa Wind Total
Valid: 20250228 - 20250306



GEFS Week-2 700-hPa Wind Total
Valid: 20250228 - 20250306

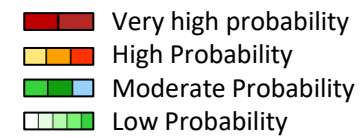


GEFS Week-2 200-hPa Wind Total
Valid: 20250228 - 20250306



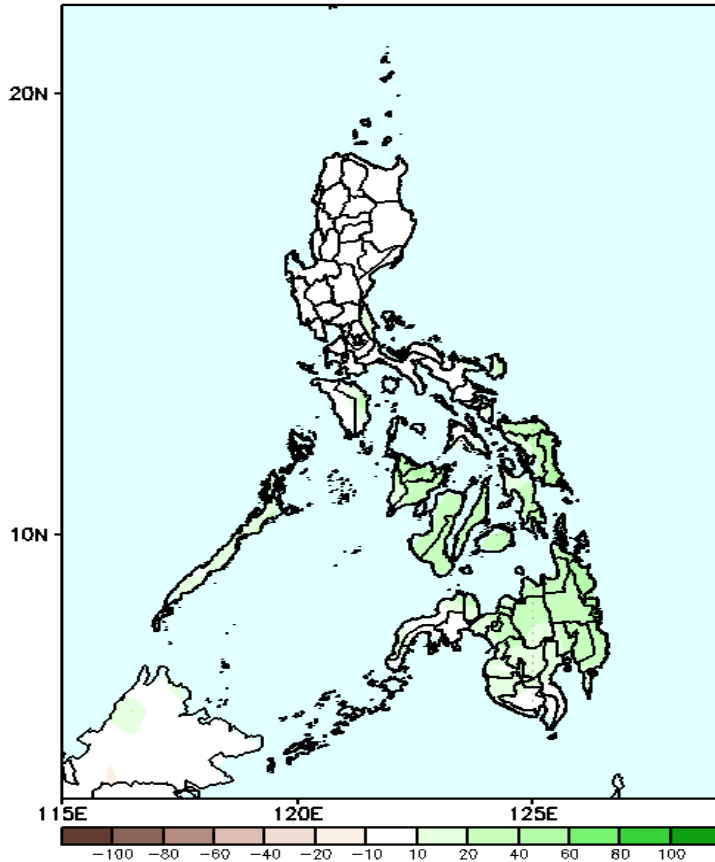
Northeast Monsoon affecting Northern Luzon while Easterlies affecting the rest of the country during the forecast period

Precipitation Anomaly and Exceedance Probability > 25/50 mm



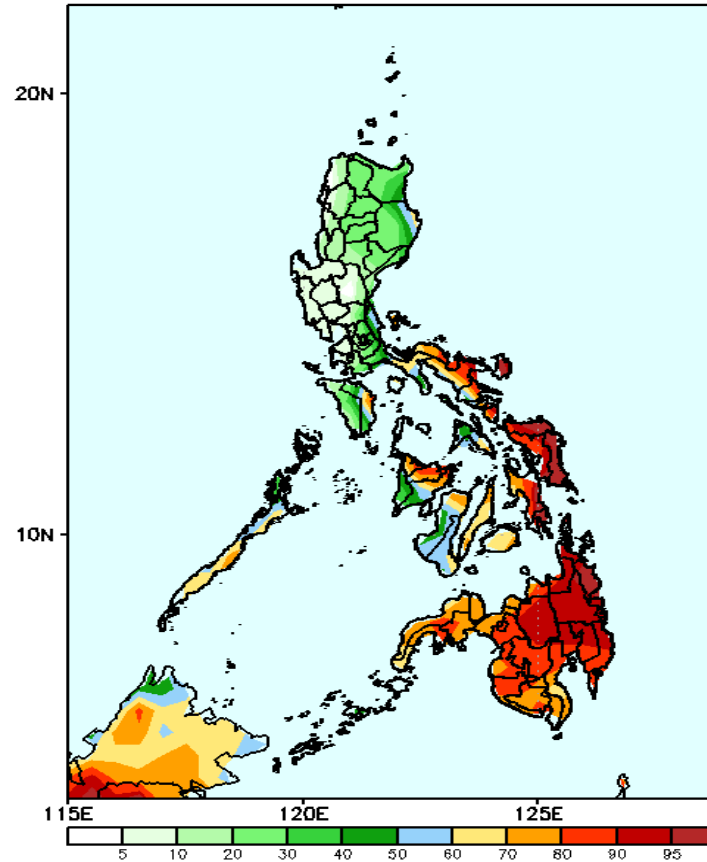
Week 2: Feb 28-Mar 06, 2025

GEFS Week-2 Precip Anomaly
Valid: 20250228 - 20250306



Increase of rainfall of 20-70mm is expected in MIMAROPA, Sorsogon, Visayas and Mindanao.

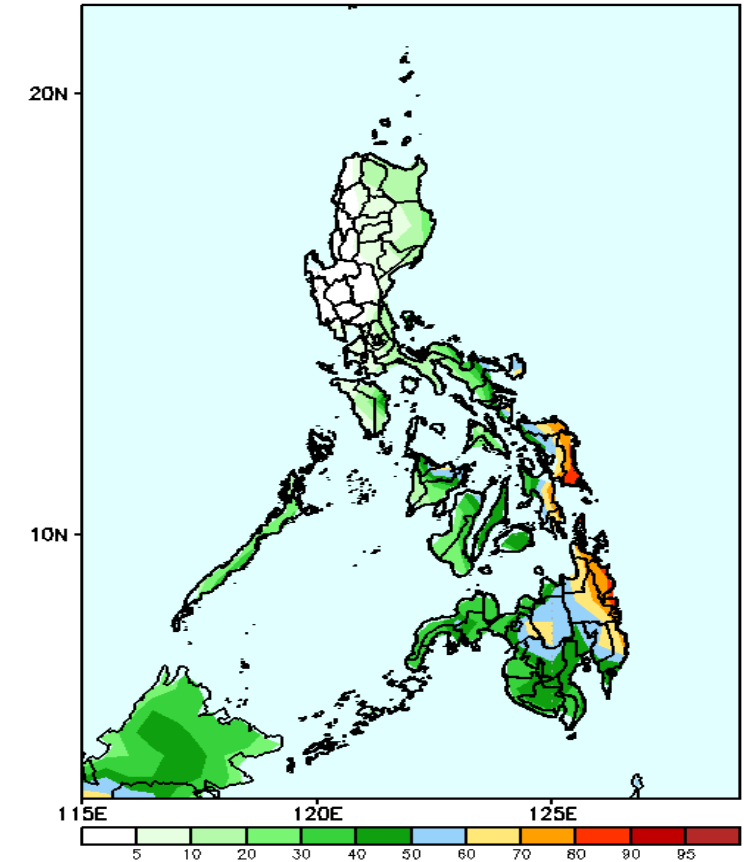
GEFS Week-2 Exceedance Prob. > 25mm
Valid: 20250228 - 20250306



Probability to Exceed 25mm

- High to very high over Catanduanes, Eastern Visayas and Mindanao;
- Moderate to high over the eastern most part of Isabela, southern Luzon, and the rest of Visayas;
- Low to moderate over the rest of Luzon

GEFS Week-2 Exceedance Prob. > 50mm
Valid: 20250228 - 20250306



Probability to Exceed 50mm

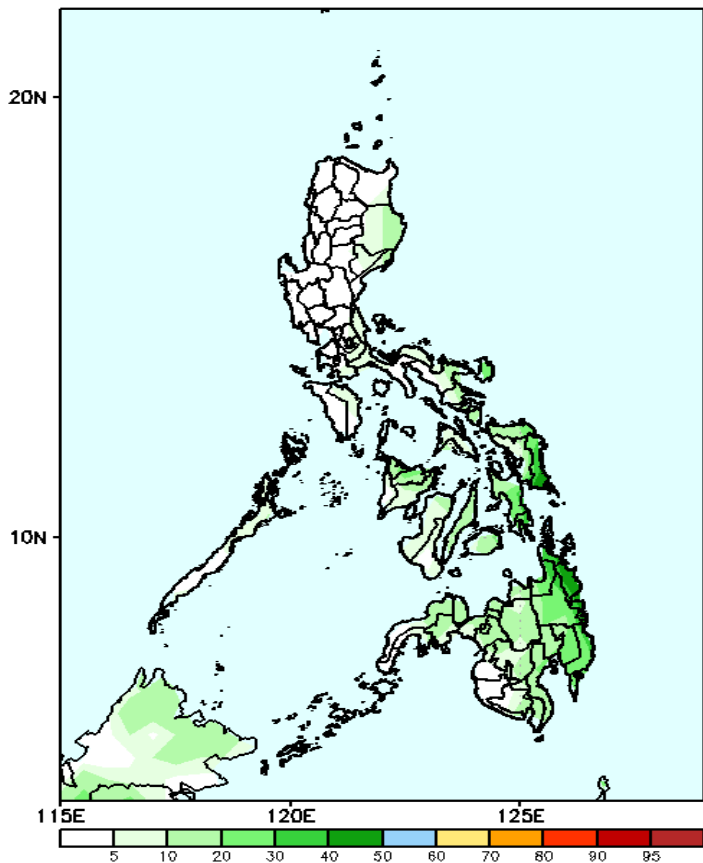
- Moderate to high over most of Bicol Region, Aklan, Capiz, Eastern Visayas, and most of Mindanao;
- Low to moderate over the rest of the country.

Exceedance Probability > 100/150/200 mm

- Very high probability
- High Probability
- Moderate Probability
- Low Probability

Week 2: Feb 28-Mar 06, 2025

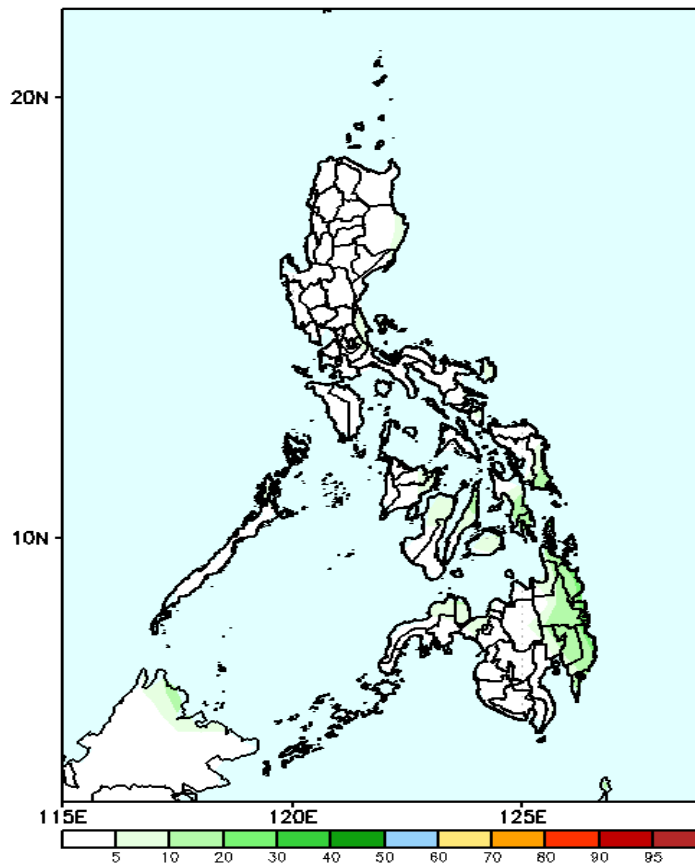
GEFS Week-2 Exceedance Prob. > 100mm
Valid: 20250228 - 20250306



Probability to Exceed 100mm

- Low to moderate across the country. ;

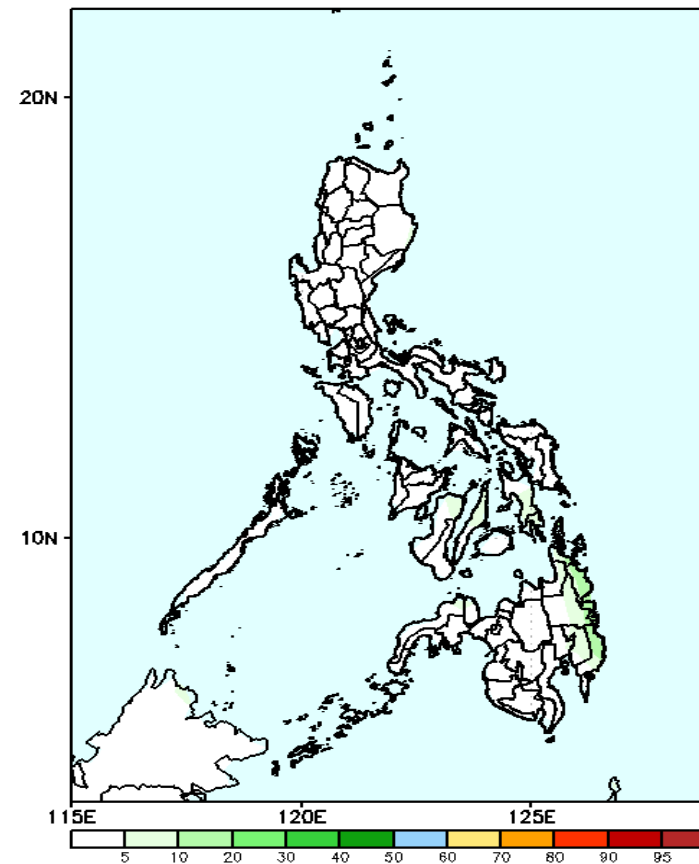
GEFS Week-2 Exceedance Prob. > 150mm
Valid: 20250228 - 20250306



Probability to Exceed 150mm

- Low across the country.

GEFS Week-2 Exceedance Prob. > 200mm
Valid: 20250228 - 20250306

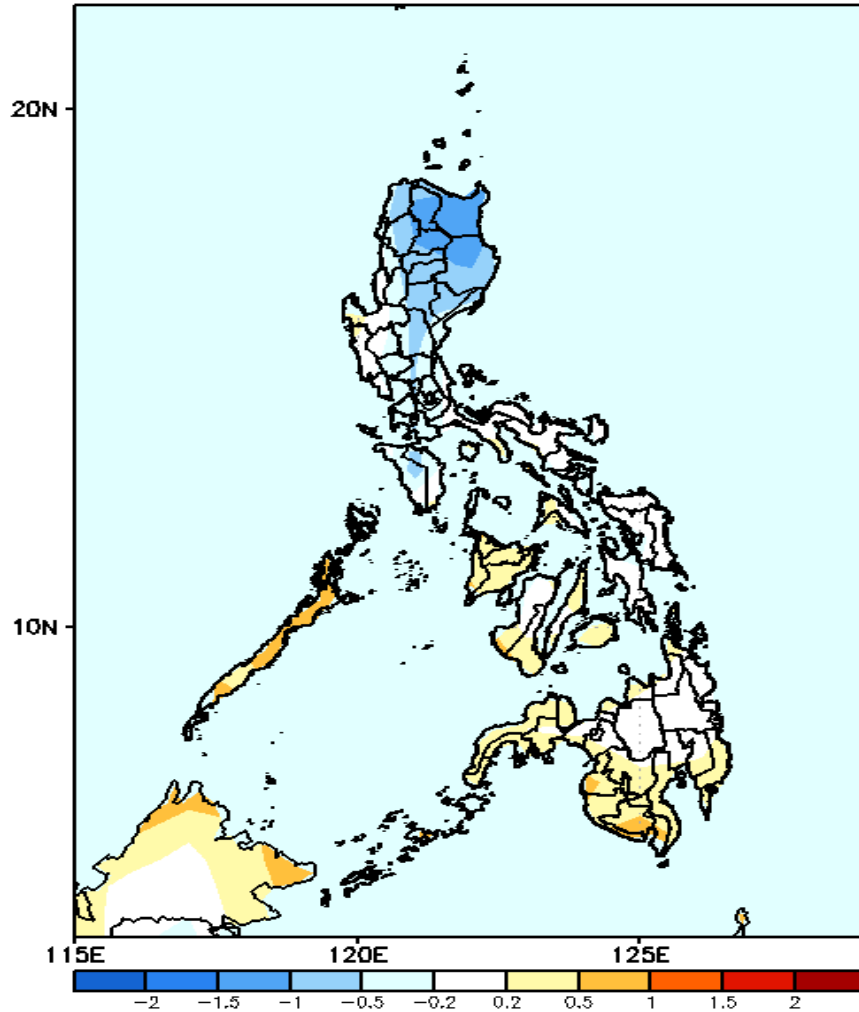


Probability to Exceed 200mm

- Low across the country.

GEFS Week-1 & 2 Forecasts: T2m Anomaly

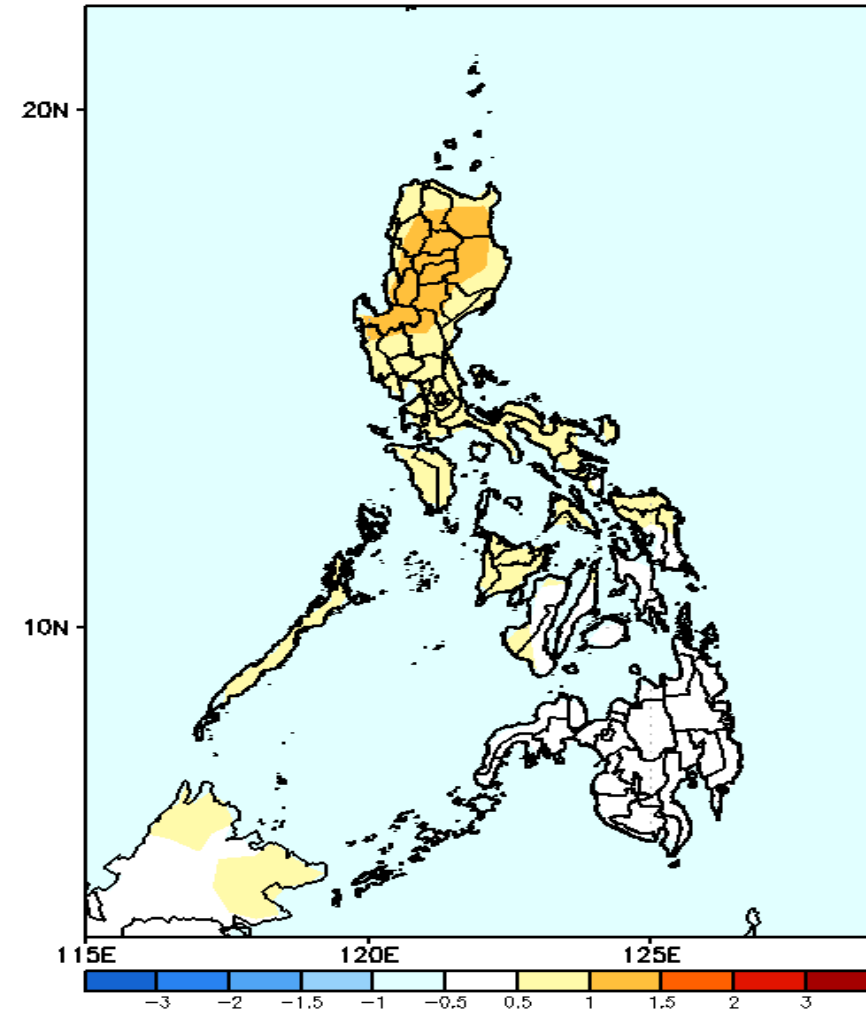
GEFS Week-1 T2m Anomaly
Valid: 20250221 - 20250227



2m Temperature Week 1: Feb 21-27, 2025

Slightly cooler to cooler than average air temperature will likely be experienced in Northern and Central Luzon while near to slightly warmer than average surface air temperature is expected for the rest of the country.

GEFS Week-2 T2m Anomaly
Valid: 20250228 - 20250306



2m Temperature Week 2: Feb 28-Mar 06, 2025

Near to slightly warmer than average surface air temperature will likely be experienced in Luzon and Visayas while near average surface air temperatures is expected in Mindanao.